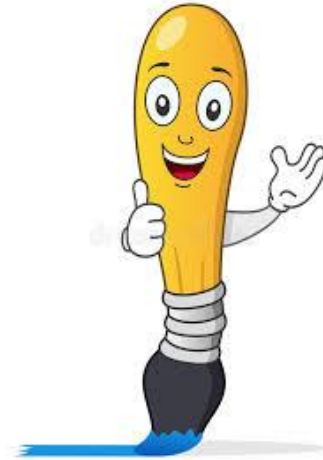


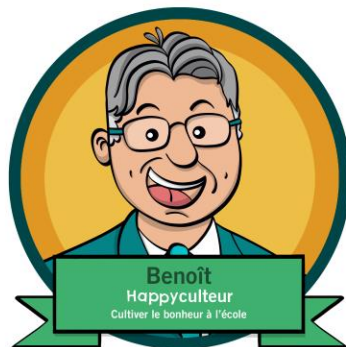
Épisode 12

Dessine-moi !



B@E

Bonjour!



Je suis Benoît

À chaque semaine, je vais vous proposer des idées afin de cultiver un peu plus de bonheur dans votre école.



A decorative graphic featuring a large dashed blue circle that frames the central text. Various colored circles (green, yellow, orange, red, blue) are scattered around the page. A large cyan ring is positioned at the top. A blue circle containing white quotation marks is located above the text. In the bottom right corner, there is a yellow circle with the text 'B@E' and a blue smiley face.

“

Lors de cette activité,
votre Happyculteur vous invite à faire
preuve d'un grand sens de
l'observation. En effet, on vous
propose une activité ludique de
création de caricatures.

A decorative background featuring a large dashed light-blue circle. Inside and outside this circle are various colored shapes: a large lime green circle at the top left, a large cyan ring at the top center, a large yellow circle at the top right, a large orange circle at the bottom left, and a large yellow circle at the bottom right. Smaller circles in green, blue, orange, and pink are scattered throughout. A blue circle containing the text "“" is positioned above the main text.

“

Tu auras la chance de représenter un
ami, un membre du personnel ou
encore un(e) artiste connu(e) tout en
t'amusant !

A yellow circle containing the text "B@E" in a stylized font, with a blue smiley face below it.

B@E

The background features several overlapping circles in various colors: orange, yellow, pink, green, and teal. Some circles have dashed outlines. A large teal circle with a white center is prominent in the bottom right. A yellow circle with the text 'B@E' and a blue arrow is also visible in the bottom right. A large teal number '1' is centered in the upper half of the page.

1

L'enseignant présente une leçon au
sujet de la caricature.
(voir annexe)

The background is white with various colorful geometric shapes. There are several circles in shades of orange, yellow, green, and blue. Some are solid, some are dashed outlines, and some are thick rings. A large blue number '2' is centered in the upper half of the page. In the bottom right corner, there is a yellow circle containing the text 'B@E' with a blue arrow pointing to the right.

2

L'enseignant demande aux élèves de choisir un membre du personnel, un membre du public, un(e) artiste connu(e), lui-même, autre.

The background is white with various colorful geometric shapes. In the top left, there is a large orange ring with a dashed red inner circle, overlapping a yellow circle and a small pink circle. In the top center, a large blue number '3' is centered within a large dashed blue circle. In the top right, there is a green circle with a white dot, a small orange circle, and a green circle with a dashed yellow border. In the bottom left, there is a green circle with a dashed green border, a small cyan circle, and a large green circle. In the bottom right, there is a large cyan ring, a cyan circle with a dashed cyan border, and a yellow circle with the text 'B@E' and a blue arrow pointing right.

3

L'élève dessine sous forme de caricature la personne choisie afin de la faire identifier par ses amis de la classe.



Variante A

On peut demander à tous les élèves d'une classe ou de l'école de dessiner la même personne.
(Par exemple l'enseignant ou la direction de l'école)
On affiche tous les dessins dans les corridors ou sur un tableau commun.

The background features several overlapping circles in various colors (orange, yellow, pink, green, blue, cyan) and dashed outlines. A large dashed blue circle is centered at the top, containing the title. A yellow circle with 'B@E' and a blue arrow is located in the bottom right corner.

Variante B

On peut exposer les caricatures ainsi qu'une photo des personnes dessinées près de la classe, à l'entrée de l'école ou sur la page Facebook de l'école.

The slide features a white background with several decorative elements: a large orange ring with a dashed red inner circle in the top left; a large light blue dashed circle in the top center; a large green circle with a white dot in the top right; a large blue ring in the bottom right; a yellow circle with 'B@E' and a blue arrow in the bottom right; and various smaller solid and dashed circles in yellow, pink, green, and cyan scattered throughout.

Variante C

Il est possible de nommer les personnes dessinées sur l'oeuvre ou de laisser les autres deviner de qui il s'agit.

The slide features a white background with several decorative elements: a large orange ring with a dashed red inner circle in the top left; a large light blue dashed circle in the top center; a green circle with a white dot in the top right; a yellow circle with a dashed green inner circle in the top right; a large blue ring in the bottom right; a yellow circle with 'B@E' and a blue arrow in the bottom right; a green circle with a dashed green inner circle in the bottom left; a large green circle in the bottom left; a small cyan circle in the bottom left; and a small pink circle in the middle left.

Variante D

Sans nécessairement parler de caricature, on peut tout simplement demander aux élèves de dessiner la personne choisie à partir d'une photo ou d'observation directe.



RESSOURCES

- Renseignements généraux sur les caricatures
(outil pour le personnel enseignant)

Merci!



**Vous avez des idées pour
nos prochaines semaines?
Écrivez-moi!**

Happyculteur@bonheuralecole.org





Une présentation de Bonheur à l'école

www.bonheuralecole.org